

# Nurturing Our Community to Nurture the Urban Forest

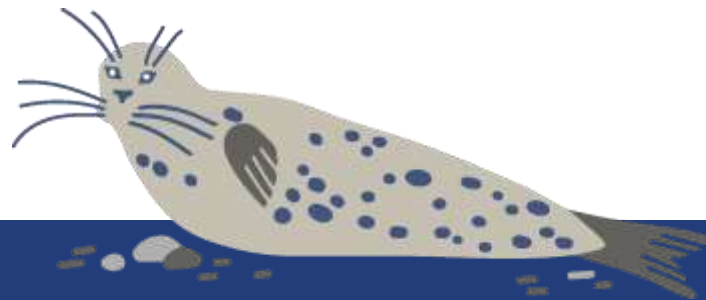
Jessica Farmer & Ali Lakehart  
Seattle Public Utilities  
Trees for Neighborhoods



# Seattle Public Utilities

Partnering with you to protect our environment.

We provide programs and opportunities that enable all of us to care for our environment together.





# Trees for Neighborhoods

Plant, Grow, Care for, and  
Celebrate trees!







SPU logistics



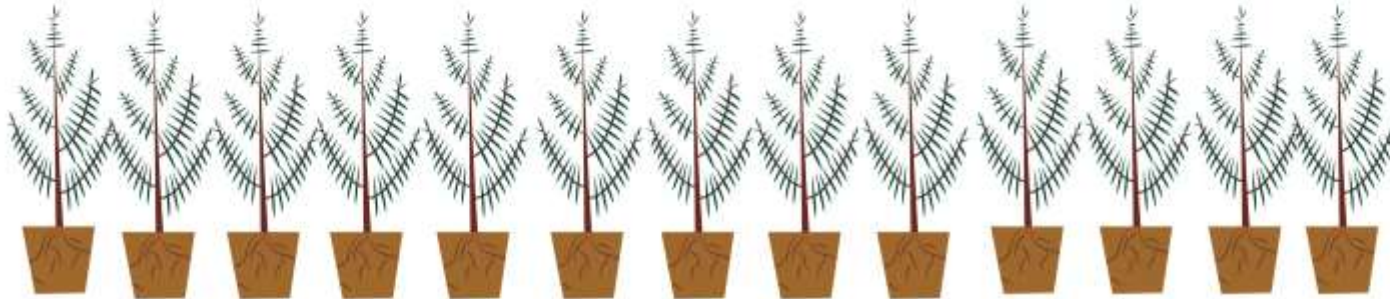
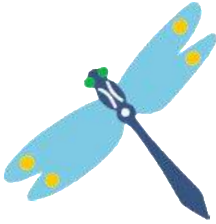






# Cedar City:

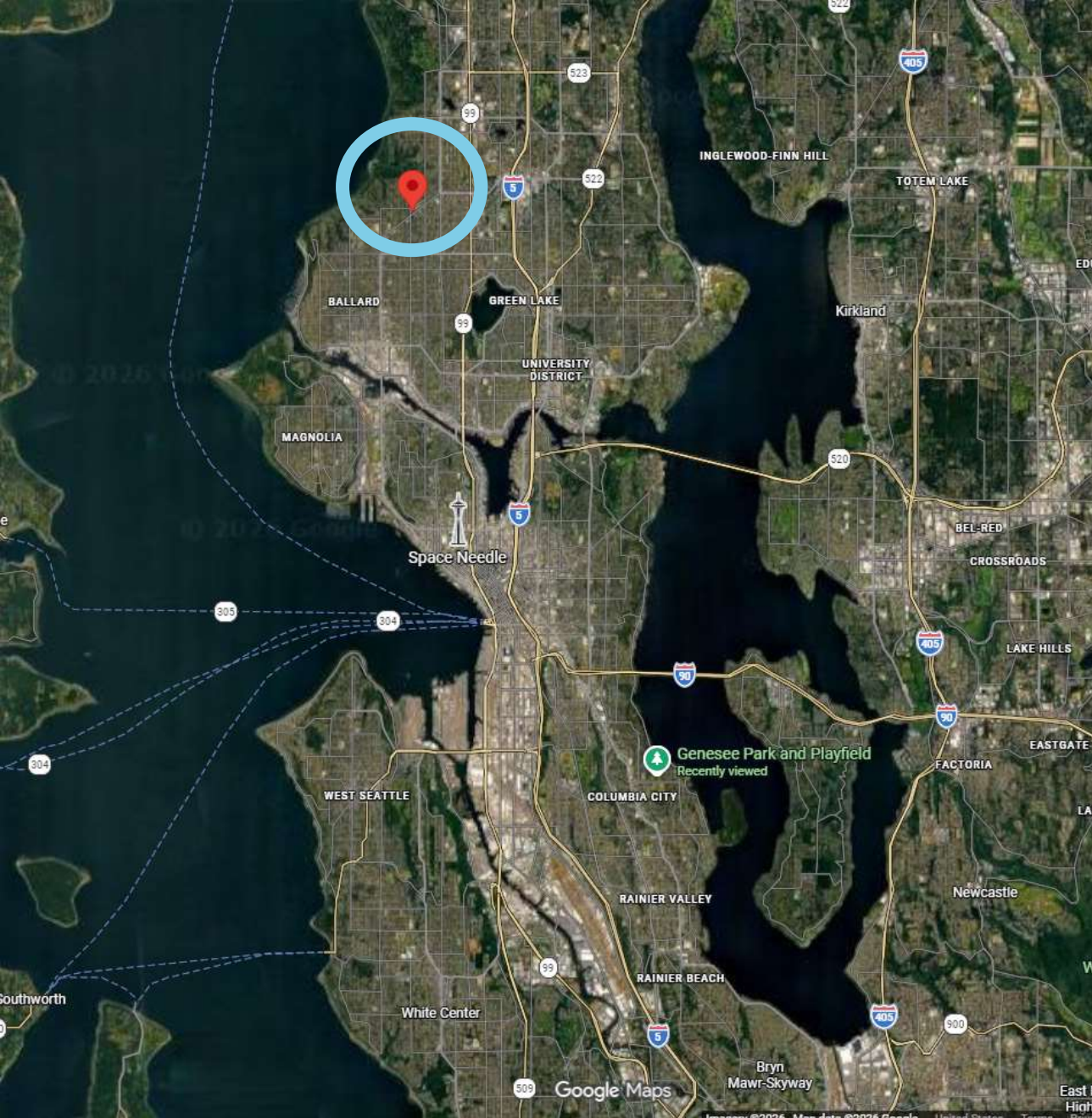
## A Seattle tree storage place



**Find Out More:**  
[seattle.gov/utilities/urban-tree-nursery](https://seattle.gov/utilities/urban-tree-nursery)









W

25  
Forsythia  
variegata



**Cedar City:**  
A Seattle tree storage pole

**Garbage**

**Recycle**







# Coming soon! A tree nursery



Trees for Neighborhoods will grow trees here for Seattle residents to plant. The nursery will not be open to the public.

## 即將開幕： 樹苗圃

Trees for  
Neighborhoods 將在此  
培育樹苗，供市民  
種植之用。

## Próximamente: un vivero de árboles

Próximamente, el vivero de  
árboles de Trees for  
Neighborhoods se abrirá  
para cultivar árboles que  
podrán ser plantados por  
los residentes de Seattle.

## 신물매김 나무 묘목장

Trees for  
Neighborhoods 나무  
묘목장은 주민들이  
심을 수 있는 나무를  
배양하는 데 사용됩니다.  
이 나무들은 주민들이  
심을 수 있는 나무를  
배양하는 데 사용됩니다.



Seattle  
Public  
Utilities

## Find Out More

Web: [www.seattle.gov/neighborhoods](http://www.seattle.gov/neighborhoods)  
Email: [tree@seattle.gov](mailto:tree@seattle.gov)  
Call: (206) 386-3300



ALL CITY  
PLANTER

Coming soon! A nursery















# Seattle Opportunity Work (SOW) Corps



## Operations & maintenance





Coming soon! A tree nursery

THE CITY OF BOSTON  
DEPARTMENT OF PUBLIC WORKS  
OFFICE OF COMMUNITY DEVELOPMENT

PLANTING TREES TO IMPROVE OUR ENVIRONMENT

FOR MORE INFORMATION, VISIT [www.boston.gov](http://www.boston.gov) OR CALL 311

PLANTING TREES TO IMPROVE OUR ENVIRONMENT

FOR MORE INFORMATION, VISIT [www.boston.gov](http://www.boston.gov) OR CALL 311

NO TRESPASSING

NO TRESPASSING

NO TRESPASSING



**We support the  
people, they support  
the trees.**



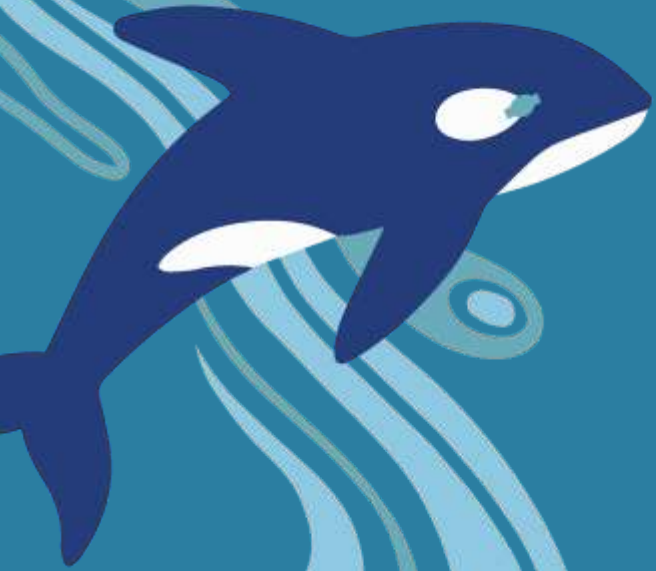








**Urban trees slow and  
clean stormwater  
runoff while cooling  
and cleaning Seattle's  
creeks.**









# Questions?

Jessica Farmer

Urban Tree Health & Supply Advisor

[jessica.farmer@seattle.gov](mailto:jessica.farmer@seattle.gov)

206.586.2297

Ali Lakehart

Trees for Neighborhoods Team Lead

[ali.lakehart@seattle.gov](mailto:ali.lakehart@seattle.gov)

206.531.5842

