

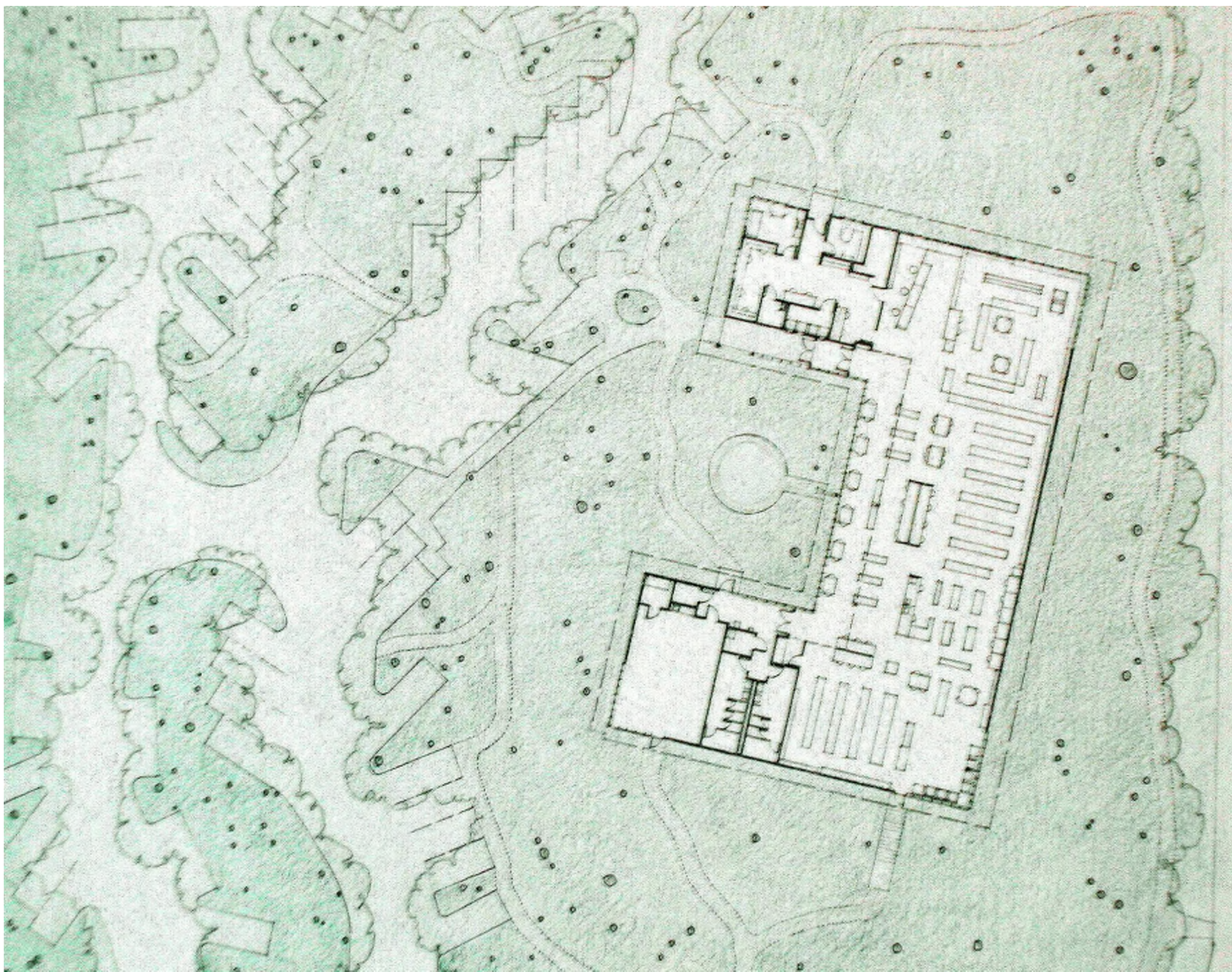






Maple Valley Library

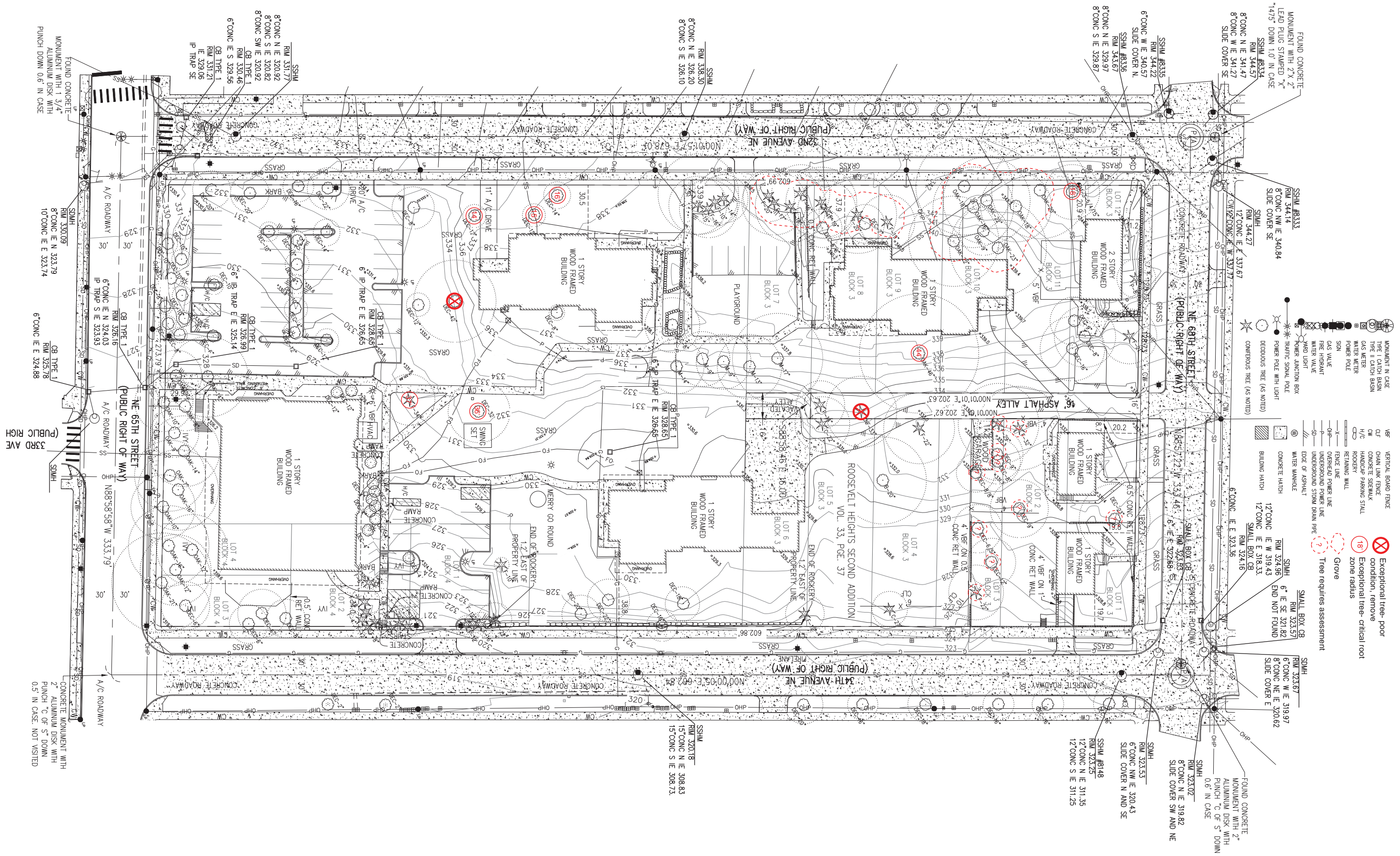






















Inspector: PT  
 Certified Arborist #PN-1838A  
 ISA Tree Risk Assessment Qualified

TREE RISK ASSESSMENT MATRIX  
 Polygon Homes - Bryant Project  
 3300 NE 65th St

Date: 10/15/2013  
 Field Work Completed 8/05

Tree #	Species	DBH (in.)	Drip - line (ft.)	CRZ (ft.)	Vigor	Structure	Defects / Comments	Target	Likelihood of Failure	Likelihood of Impacting Target	Likelihood of Failure & Impact Calc.,	Consequences of Failure	Tree Risk Rating	Exceptional Tree Preservation Value /	Maintenance Recommend - ations
607	Japanese snowbell, <i>Styrax japonica</i>	4.2	6	7	Fair	Fair	n/a	Pedestrians	Improbable	Low	Unlikely	Negligible	Low	Low	
608	Japanese snowbell, <i>Styrax japonica</i>	3.9	5	7	Poor-Fair	Fair	The crown has minor dieback.	Pedestrians	Improbable	Low	Unlikely	Negligible	Low	Low	
609	Deodar cedar, <i>Cedrus deodara</i>	36.6	21	37	Good	Fair-Good	Root growth is causing damage to surrounding sidewalk. The crown contains deadwood upto 1.5 inches diameter.	Building, and pedestrians.	Probable	Medium	Somewhat likely	Significant	Moderate	Moderate / Exceptional	Crown clean pruning.
610	American elm, <i>Ulmus americana</i>	35.2	33	36	Good	Good	The crown contains minor deadwood.	Playground, and pedestrians.	Possible	Medium	Unlikely	Significant	Moderate	Moderate / Exceptional	Crown clean pruning.
611	Sargents spruce, <i>Picea brachytyla</i>	6.5	8	10	Good	Good	n/a	-	-	-	-	-	-	Moderate	If retained remove invasive Himalayan blackberry, <i>Rubus discolor</i> growing around the tree.
612	Douglas fir, <i>Pseudotsuga menziesii</i>	13.8	14	14	Good	Good	The crown contains deadwood upto 1.5 inches diameter.	Pedestrians, and parked vehicles.	Probable	Medium	Unlikely	Minor	Low	Moderate	Crown clean pruning.
613	Douglas fir, <i>Pseudotsuga menziesii</i>	13.6	14	14	Good	Good	The crown contains deadwood upto 1.5 inches diameter.	Pedestrians, and parked vehicles.	Probable	Medium	Unlikely	Minor	Low	Moderate	Crown clean pruning.
614	Douglas fir, <i>Pseudotsuga menziesii</i>	19.3	15	20	Good	Good	The crown contains deadwood upto 1.5 inches diameter.	Pedestrians, and parked vehicles.	Probable	Medium	Unlikely	Minor	Low	Moderate	Crown clean pruning.
615	Douglas fir, <i>Pseudotsuga menziesii</i>	25.4	21	27	Good	Good	The crown contains deadwood upto 1.5 inches diameter.	Pedestrians, and parked vehicles.	Probable	Medium	Unlikely	Minor	Low	Moderate	Crown clean pruning.

Urban Forestry Services, Inc.  
 15119 McLean Road,  
 Mount Vernon, WA 98273  
 (360) 428-5810







