



PORTLAND PARKS & RECREATIONSM

Healthy Parks, Healthy Portland

After the Storm: Subtle to Severe

Storm Preparation and Response





PORTLAND PARKS & RECREATION SM

Healthy Parks, Healthy Portland

Larry Maginnis- Urban Forestry Supervisor



ISA Certified Arborist – Municipal Specialist
ISA Certified Tree Worker Climber Specialist
ISA Certified Tree Worker Aerial Lift Specialist
ISA Tree Risk Assessment Qualification
ASCA Consulting Academy - Graduate
Municipal Foresters Institute-Graduate
B.S. Forestry -University of Montana







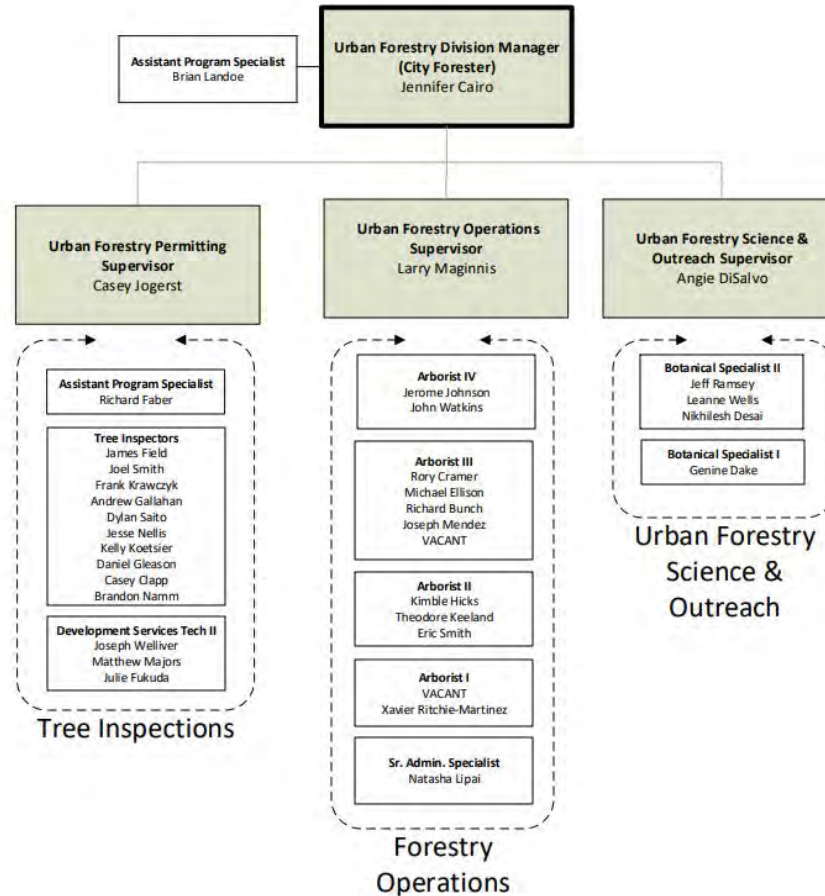
City of Portland –Urban Forestry Division



- 145 Square Miles
- 50-1188' Elevation
- 4851 Miles Of R.O.W.
- 218,610 Street Trees
- 3+ Million Park Trees
- ~140 Developed Parks
- ~100 Undeveloped Parks



PP&R Urban Forestry Division





PORTLAND PARKS & RECREATIONSM

Healthy Parks, Healthy Portland



Thinking about removing or pruning a tree?

Updated tree rules are in effect for properties across the city.

STREET TREES - Tree removal, planting and most tree maintenance in a curb or planting strip requires a permit. Planting and pruning permits are free.

YARD TREES - Removal of large yard trees requires a permit. Zoning restrictions may exist for tree removal, depending on where you live.

REPLANTING - Planting new trees is often required when a tree is cut so that future generations can enjoy the benefits of our urban forest. A mitigation fee may be required if replanting is not feasible.

DEVELOPMENT - Tree rules and permitting requirements apply to both construction and non-construction situations.

PUBLIC SAFETY IS ALWAYS FIRST - Any tree that becomes dangerous will be permitted for removal. Call 503-823-TREE (8733) 24 hours a day if there's a street tree emergency in your neighborhood.

ENHANCING OUR URBAN FOREST - The City's trees and the urban forest are continually growing and changing. Portland's tree rules help improve the forest, maintain our heritage and increase the benefits trees provide all Portlanders. The rules also help parts of Portland with fewer trees. Fees collected will fund tree plantings in places where they are needed.

*Call
before
you cut*



We're here to help

Knowledgeable city staff are ready to help. Contact us to learn if you need a permit and find other tree resources.

Visit www.portlandoregon.gov/trees

Email trees@portlandoregon.gov

Call 503-823-TREES (8733)



PORTLAND PARKS & RECREATIONSM

Healthy Parks, Healthy Portland

24/7 Emergency Response - Subtle



Photo Credit: Dylan Saito



Storm Staffing



- 12 Arborists
- 10 Tree Inspectors
- 3 Intake Personnel





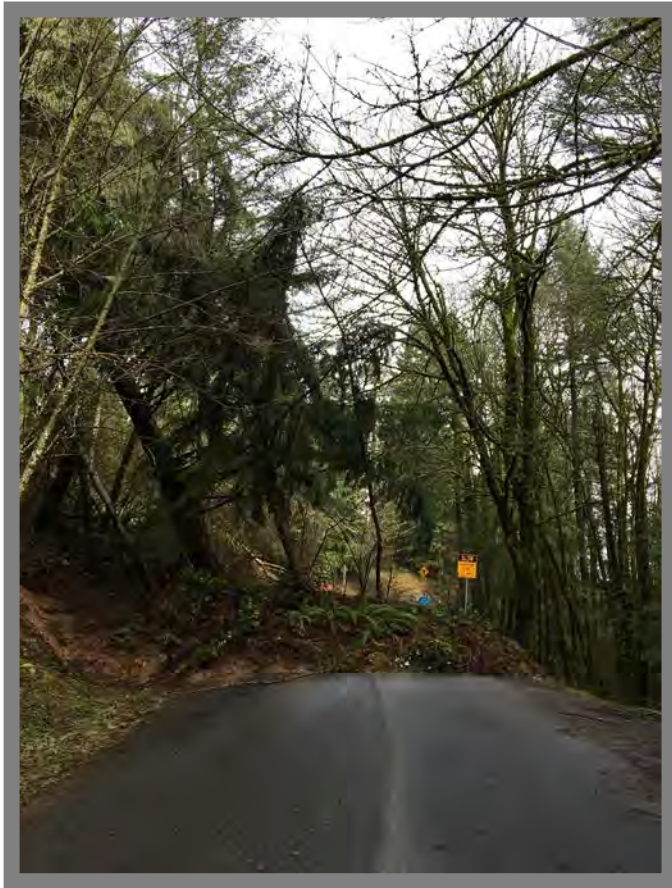








Before The Storm - Setting the Tone - Severe



- Forecasting
- Agency Communications
- Review SOP's and Re-Defining Responsibilities
- Internal Staffing and Training
- Equipment Preparations
- Mutual Aid Agreements
- Emergency Contracting



Forecasting - Don't Always Believe the Hype



- Weather
- Crime
- Crime Prevention

PORTLAND SNOW STORM 2016



WE WILL REBUILD

memegenerator.net

Portland Parks and Rec

Web Access: <https://www.nw-weather.net/PortlandParksandRec/index.php>

24/7 Toll Free: **1-800-937-8676**

Web Click Options [RADAR](#) [SATELLITE](#) [Obs](#)

Forecast Date: Tuesday, November 27, 2018

Time Issued: 10:45 AM

Forecaster: mw

Discussion

Expect scattered showers this afternoon into this evening with breezy SSW winds, but no "high" winds are expected. Showers and breezes will taper off later tonight, then looks mainly dry early Wednesday morning, before showers regenerate again late morning into Wed PM into Wed evening. Showers end by sunrise Thu, then looks dry for the whole workday.

Expect more showers in the Friday & Saturday timeframe, but no major lowland concerns with dry windows. **It looks like a dry and cooler weather pattern sets up Sunday into early next week with widespread light overnight freeze/frost concerns.**

West

	Weather	Temp (F)	Humidity (%)	Wind (mph)	Rainfall (inches)	Snow/Ice (inches)
This Afternoon	Mostly cloudy. Occasional showers. Breezy around showers.	Mid 50s	80-100%	SW 15-25	0.10 - 0.20	
Tuesday night	Partial clearing at times. Decreasing showers.	Low 40s	80-100%	SW 10-20 evening	0.10 - 0.20	
Wednesday	Mostly cloudy. Showers increase.	Low 50s	80-100%	SE 10-15	0.10 - 0.20	
Wednesday night	Partial clearing. Showers decrease.	Mid 30s	80-100%	S 5-15	0.15 - 0.25	
Thursday	Partly cloudy. Dry.	Near 50	70-100%	SE 10-15		
Thursday night	Increasing clouds. Looks dry.	Upper 30s	70-100%	SE 5-10		



Useful for Managing Resident Expectations



- Extends Beyond the Health of the Trees
- Ensures the City will Continue Functioning
- Traffic Disruptions
- Timeliness of Emergency Services

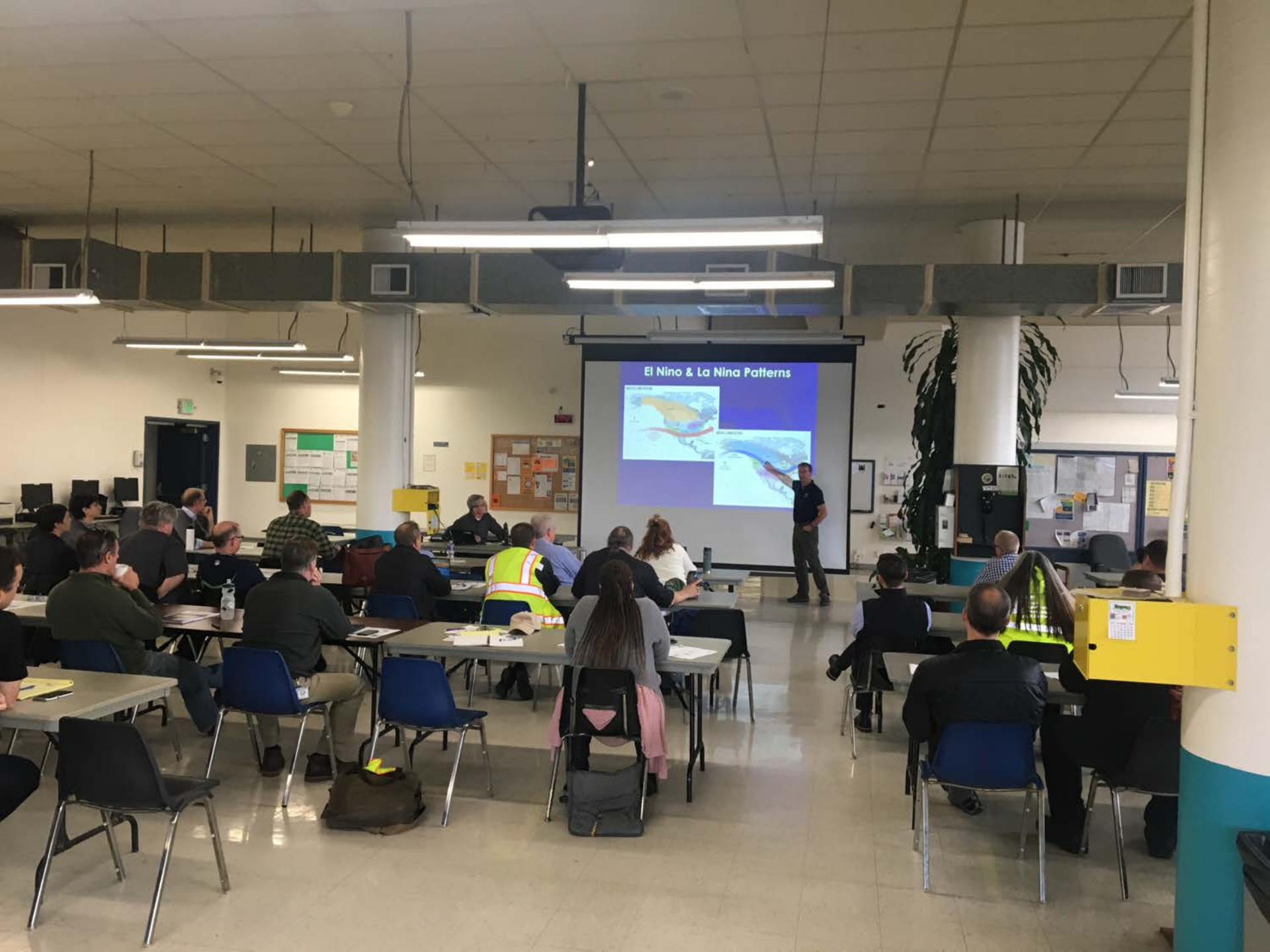


PORTLAND PARKS & RECREATION SM

Healthy Parks, Healthy Portland

Winter Storm Coordination Meeting





El Nino & La Nina Patterns





PORTLAND PARKS & RECREATIONSM

Healthy Parks, Healthy Portland

Review SOP's Define Roles



PORTLAND
PARKS & RECREATION

Healthy Parks, Healthy Portland



URBAN FORESTRY and PORTLAND BUREAU OF TRANSPORTATION STANDARD OPERATING PROCEDURE: *EMERGENCY TREE RESPONSE IN PUBLIC RIGHTS-OF-WAY*

Portland Parks and Recreation Urban Forestry (UF) is the City of Portland's "first responder" to reports of trees blocking or imminently threatening safe use of public rights-of-way, and resolves tree issues in or imminently-threatening transit ways. The Portland Bureau of Transportation (PBOT) is responsible for operation and maintenance of the City's rights-of-way. This protocol describes how UF and PBOT communicate and coordinate in order to address tree emergencies in City rights-of-way in a timely and efficient manner.

Reports of tree-related road hazards are received by both UF and PBOT Dispatch. Though UF is the first responder specifically to tree-related emergencies, the PBOT Maintenance crew is authorized to respond to road obstruction needs at any time.

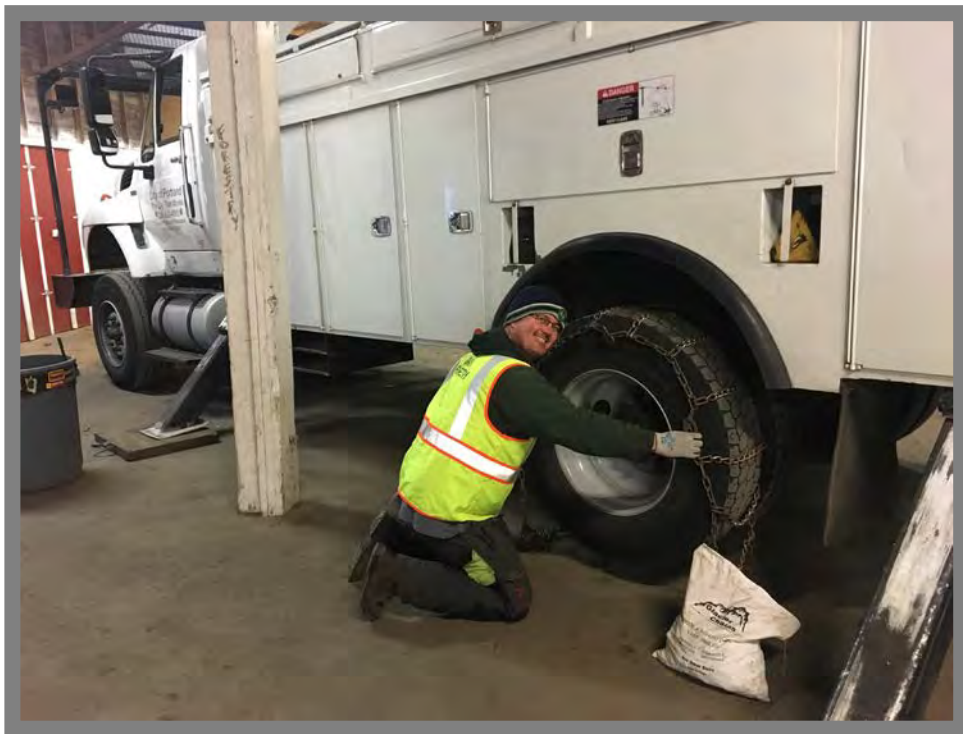
Business hours: 7:00am – 3:30pm



PORTLAND PARKS & RECREATION SM

Healthy Parks, Healthy Portland

Before the Storm Season





Ready - + 9



UF Operations Certs and Cross Training

Arborist IV (Crew Leader) (3)

ISA Certified Arborist
ISA Certified Tree Worker CS
ISA Certified Tree Worker ALS
Crane Certification
TCIA-EHAP
Pesticide Applicators License
First Aid/CPR/Defib
Work Zone Traffic Control Certificate
Class A CDL

Arborist III (4)

ISA Certified Arborist
ISA Certified Tree Worker ALS
Crane Certification
TCIA-EHAP
Pesticide Applicators License
First Aid/CPR/Defib
Work Zone Traffic Control Certificate
Class A CDL

Arborist II (3)

ISA Certified Arborist
ISA Certified Tree Worker ALS
Crane Certification
TCIA-EHAP
Pesticide Applicators License
First Aid/CPR/Defib
Work Zone Traffic Control Certificate
Class A CDL

Arborist I (2)

TCIA-EHAP
Pesticide Applicators License
First Aid/CPR/Defib
Work Zone Traffic Control Certificate
Class A CDL









PORTLAND
Healthy Parks, H







PORTLAND PARKS & RECREATION SM

Healthy Parks, Healthy Portland

Outfitting of Equipment





PORTLAND PARKS & RECREATIONSM

Healthy Parks, Healthy Portland

Mutual Aid Agreements









PORTLAND PARKS & RECREATION SM

Healthy Parks, Healthy Portland

Emergency Services Contract





PORTLAND PARKS & RECREATION SM

Healthy Parks, Healthy Portland

Wood Waste Management





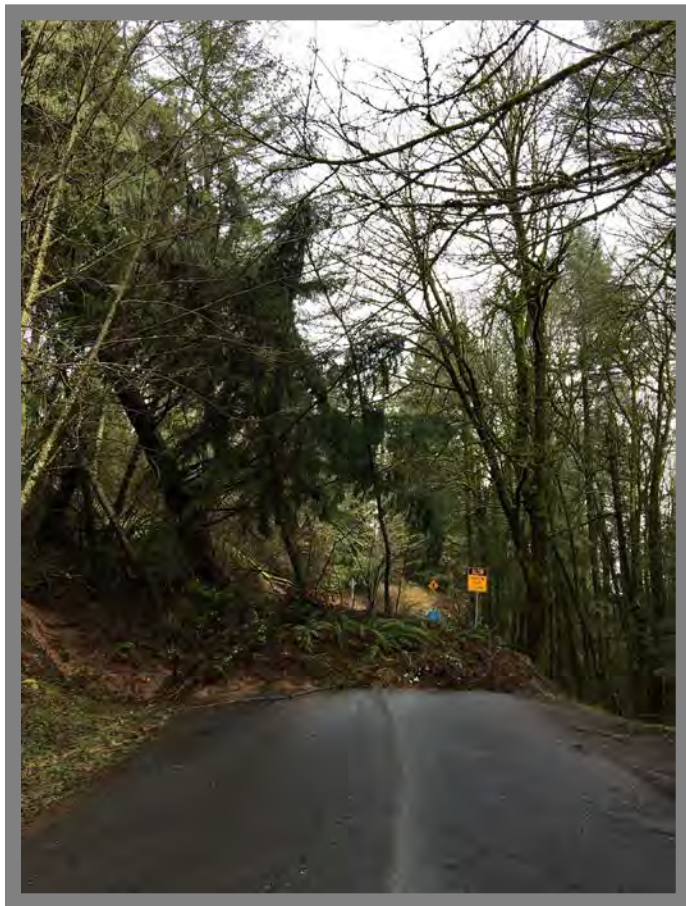
PORTLAND PARKS & RECREATION SM

Healthy Parks, Healthy Portland





Portland Winter 2016-2017



- 57" of Precipitation Avg. 42
- 147 Days of Rain
- October Wind Storm
- December Ice Storm
- January Snow Storm
- Landslide Season



PORTLAND PARKS & RECREATION SM

Healthy Parks, Healthy Portland

October Wind Storm



Photo Credit: Dylan Saito



Photo Credit: Dylan Saito



PORTLAND PARKS & RECREATION SM

Healthy Parks, Healthy Portland

December Ice Storm

432 Incidences



Photo Credit: Dylan Saito



PORTLAND PARKS & RECREATIONSM

Healthy Parks, Healthy Portland

January Snow Storm

348 Incidences

















PORTLAND PARKS & RECREATIONSM

Healthy Parks, Healthy Portland

Landslide Season - 71 Reported (avg. 20 annually)





PORTLAND
Healthy Parks







PORTLAND

Healthy Parks, H









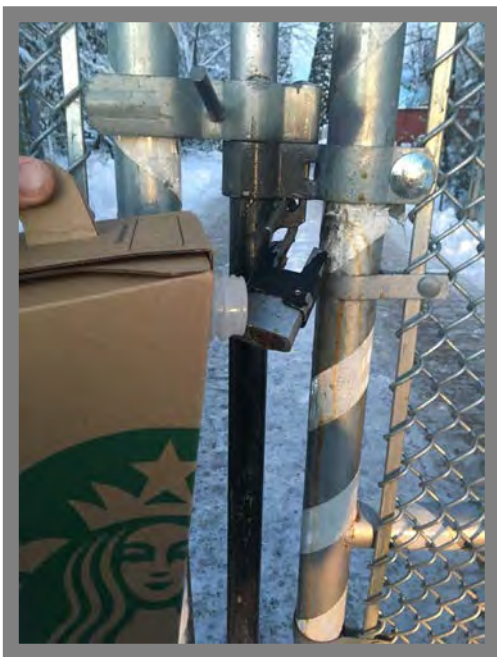




PORTLAND PARKS & RECREATION SM

Healthy Parks, Healthy Portland

Mother Nature Wants You to Fail - Be Prepared





Areas For Improvement



- Asset Management Software
- Shifting of Responsibilities
- ICS Structure and Training
- FEMA Support-Documentation



PORTLAND PARKS & RECREATIONSM

Healthy Parks, Healthy Portland

Questions and Discussion

