

A young girl with dark curly hair, wearing a white one-piece swimsuit and a small pink bow, is crouching at the edge of a wooden pier. She is splashing her hands in the shallow water, creating a small splash. The pier is made of weathered wooden planks and extends into a body of water. In the background, a dense city skyline with various skyscrapers is visible across the water. The sky is clear and blue. The overall scene is bright and sunny, suggesting a warm day.

# Partners On-The-Ground

Using Nature and Partnerships  
to Thrive in Cities





City Habitats: Working Together to Re-Think Our Cities





**Now Accepting Proposals** for projects enhancing tree canopy in urban spaces throughout Puget Sound for the benefit of water quality and human health

**Due: June 18, 2018**

More information: [www.washingtonature.org/cities](http://www.washingtonature.org/cities)



An aerial photograph of a city, likely Seattle, with a large body of water (Lake Washington) and mountains in the background. The city is densely packed with buildings and roads. A semi-transparent white box is overlaid on the left side of the image, containing text.

## **Jamie Stroble**

Climate Engagement & Community Partnerships Specialist, King County  
Climate Action Team

## **Sean Watts**

Director of Community Partnerships, Seattle Parks Foundation

## **Andrew Schiffer**

Bricktree LLC & DIRT Corps

## **Roseann Barnhill**

Aster Rosa Ecology & DIRT Corps



## Our Goal

1 Million Trees planted in King County  
by 2020, with help from our partners.

## Our Progress

With our partners, we've planted  
318,000 trees in King County on our  
way to 1 Million by 2020.

1,000,000  
**TREES**



# Seattle Parks Foundation's Work at Three Scales:

*Community:* Fiscal Sponsorship & support of 61 community groups



*Neighborhood Public Space Systems:* Planning, prioritization and implementation (Duwamish Valley, Lake City & Rainier Beach)

*Civic Scale:* Large projects requiring major political or financial capital & policy advocacy (Lake2Bay, Seattle Park District)





# Duwamish Infrastructure Restoration Training Corps - DIRT Corps

## Duwamish Tree Canopy Enhancement Project







Community Engagement for the Birds:  
Trust ➡ Buy-in ➡ Stewardship



SEATTLE **PARKS** FOUNDATION



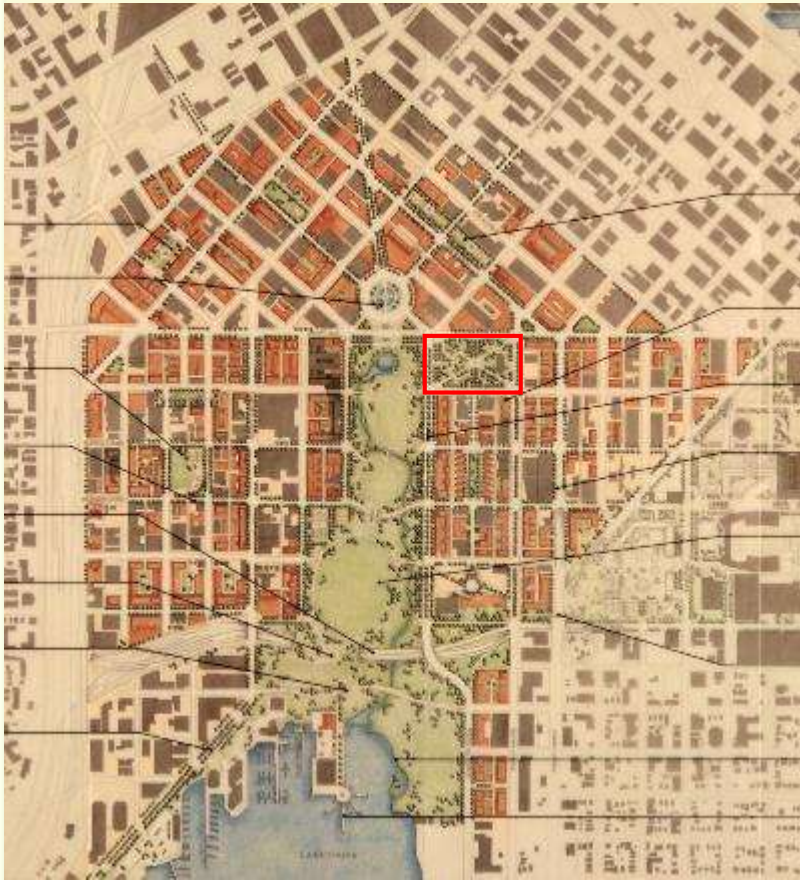
## Core Criteria for Strong Partnerships:

- Increase connections and access to open spaces
- Shared and inclusive resident leadership
- Durable public & private partnerships

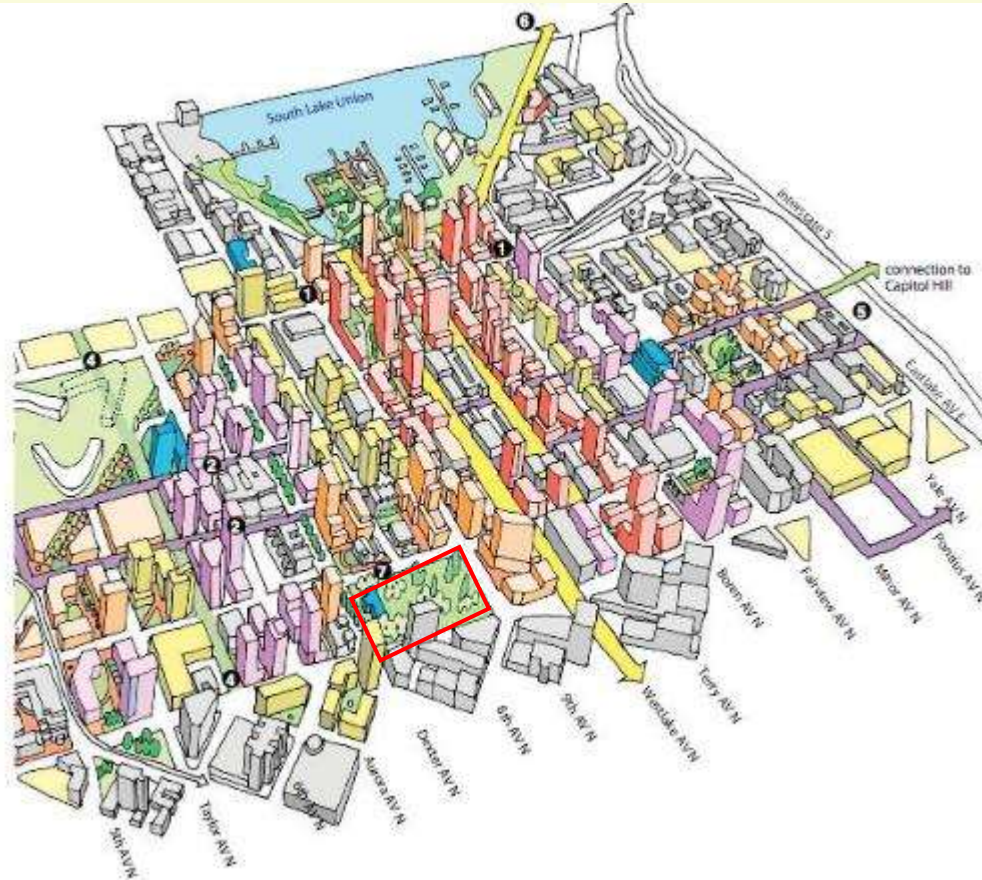




# The Foundation's Origin & Evolution



***The Seattle Commons***  
...as it could have been.



***South Lake Union***  
...such as it is.



## Little Brook is a test case for trust-building:

1. **Show up BEFORE** you're on the agenda
2. **Always ask: "Who's not in the room?"**  
Credible ambassadors; attending events
3. **Framing: "*Most people don't care about most things most of the time*"**
4. **Manage expectations**, but also create awareness of possibilities
5. **Compensation & Accommodation**  
**Resident contracts:** Administration, event planning, catering, childcare, outreach, translation

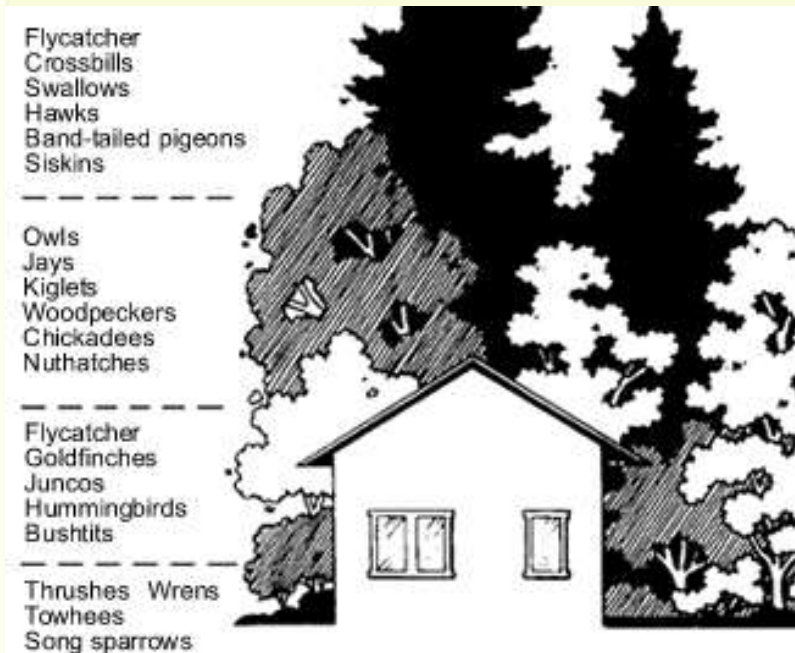




## And what does *community trust* have to do with flyways?

**Birds can be great ambassadors:** visible; often generalists and therefore common; habitats have tangible public benefits

**BUT framing and buy-in are still paramount**  
Keep asking: “What’s in it for [resident X]?”

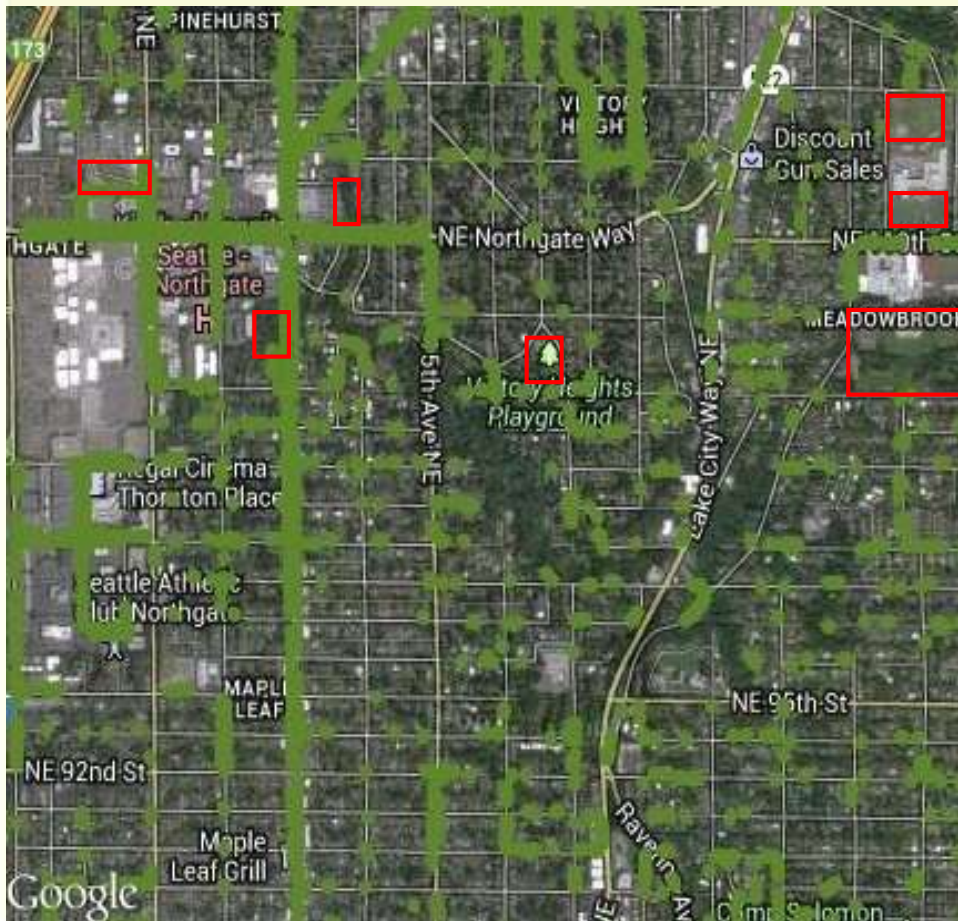


Only after tireless outreach is this generally relevant or interesting



## What does *community benefit* have to do with flyways?

Parks are never going to be sufficient & we can't expect (m)any more large open spaces...



## Urgent need for public & private realignment:

## Adapting traditional land trust & easement strategies to granular urban opportunities

AND

## Agency innovation on green infrastructure & green job pathways for local residents





## *Hyperlocal stewardship: lower barriers & increase incentives*

1. **Paid local youth** tree planting & maintenance crews
2. Cascading mentorship & **green job pathways** with certification
3. “**Adopt-a-Flyway**” programs?
4. Planting & maintenance **kits**
5. Support **community land trusts**
6. Above-code **development incentives** for easements & publicly accessible open space



“By inviting people to the table who have not had access to the decision-making process, we can imagine and create new things together that alone we could never have dreamed of.” — *Community Member*

