

LAND CONSERVATION & PRESERVATION WORK PLAN

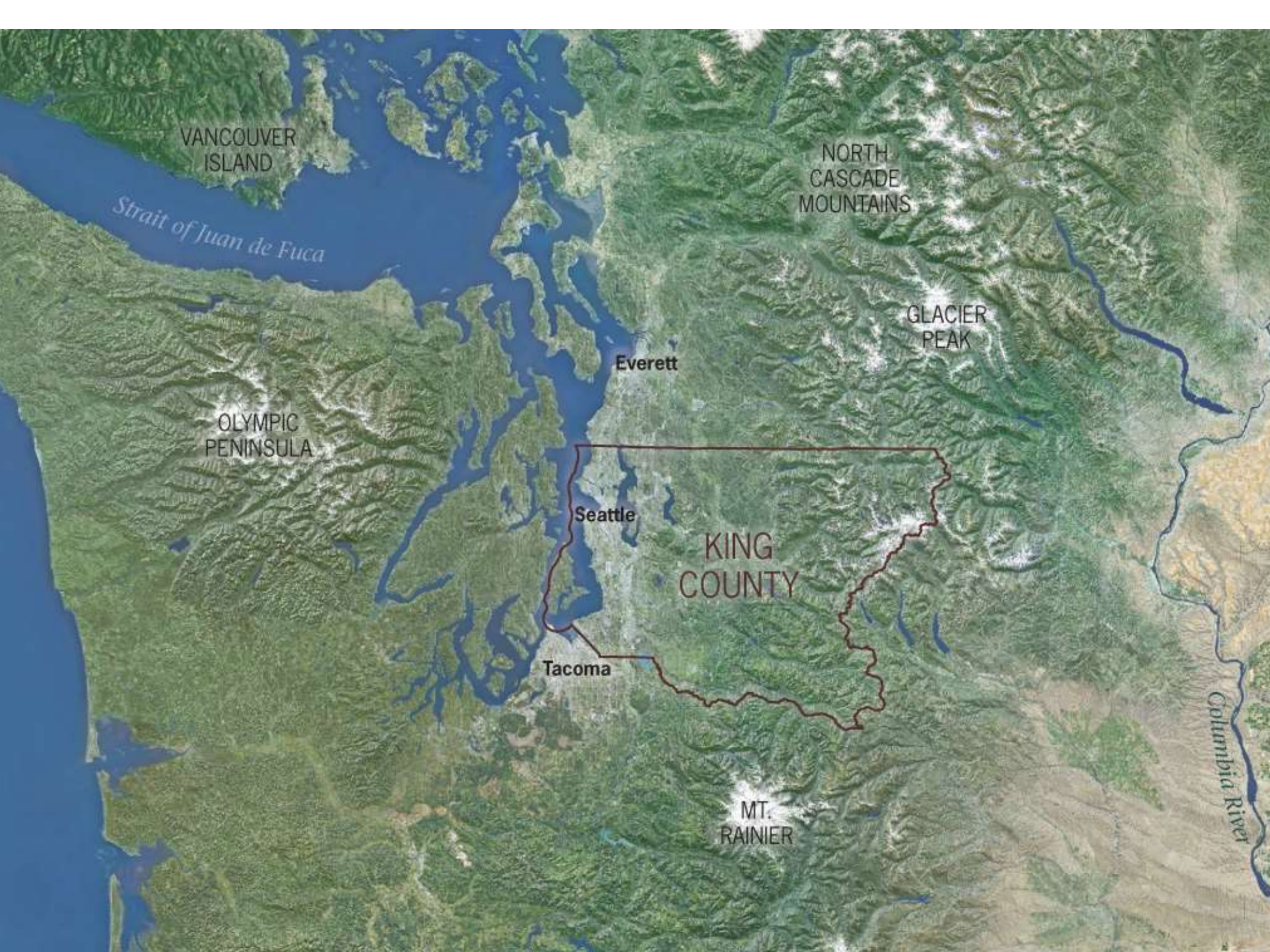


King County

Adapted for UW Urban Forest Symposium

May 23, 2017

Ingrid Lundin, King County DNRP



VANCOUVER
ISLAND

Strait of Juan de Fuca

NORTH
CASCADE
MOUNTAINS

GLACIER
PEAK

OLYMPIC
PENINSULA

Everett

Seattle

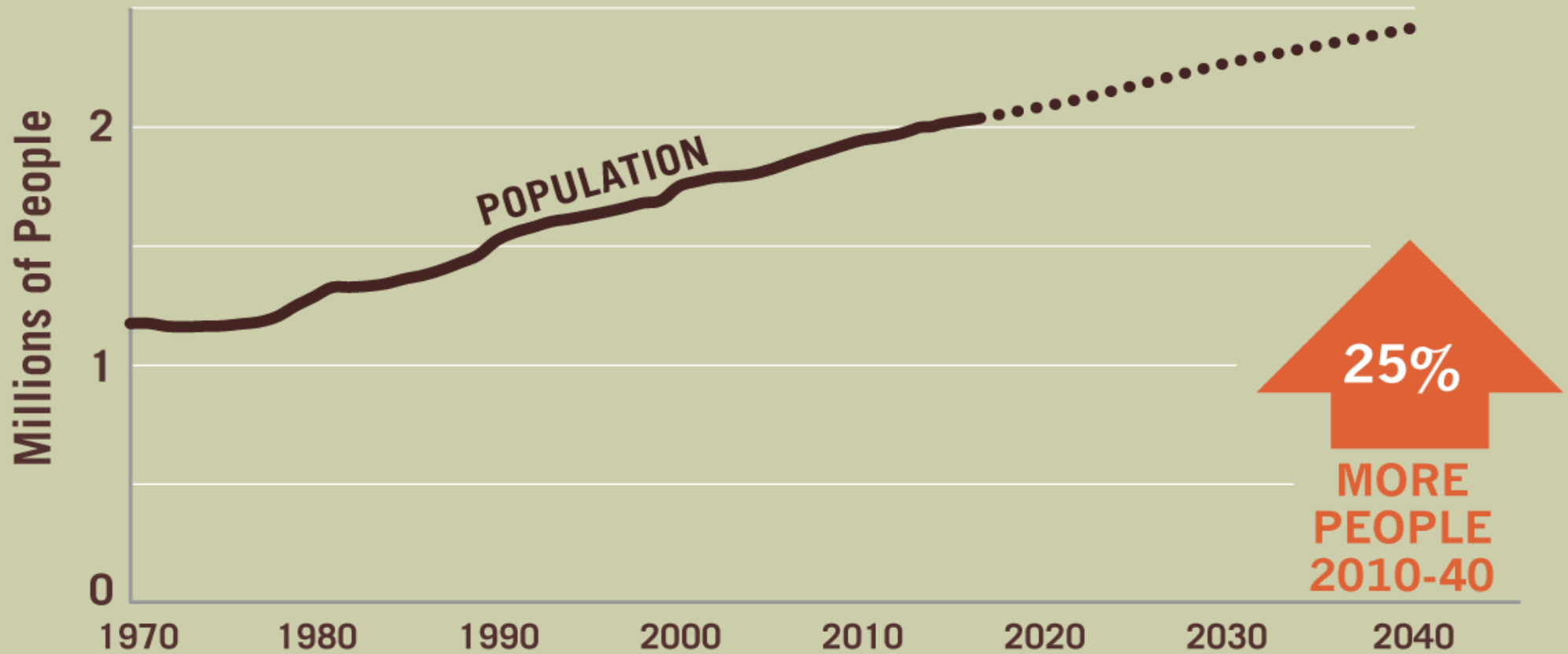
KING
COUNTY

Tacoma

MT.
RAINIER

Columbia River

King County is one of the fastest growing large counties in the U.S.



Data: WA state Office of Financial Management, *County Growth Management Population Projections: 2010-2040*, Forecasting Division, August 2012.



**Conservation
is part of
responsible
growth.**



Benefits and Value of Conservation to the Region



Climate Change



Biodiversity



Social Equity



Human Health

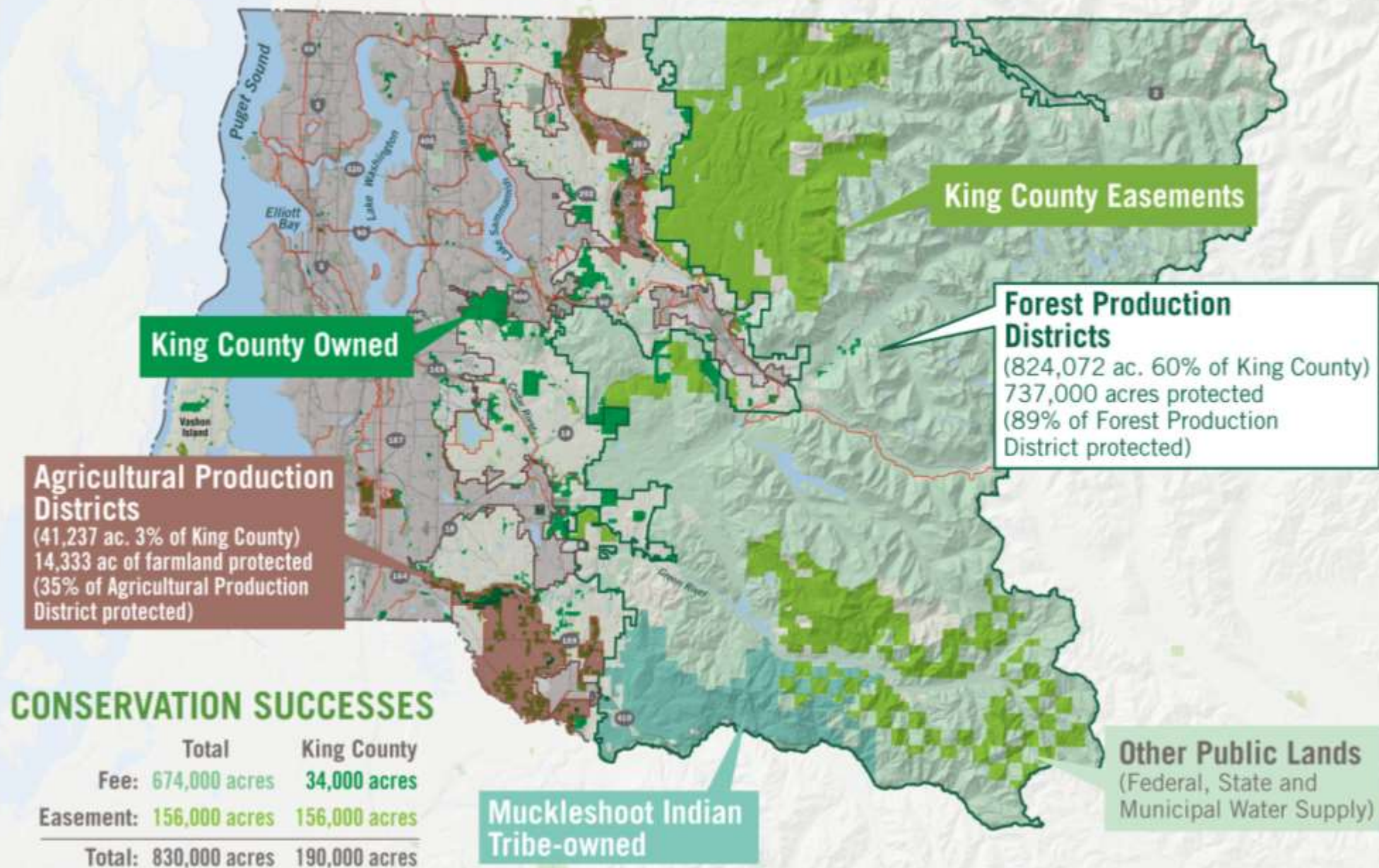


Economic Development



Competitive Advantage

Conservation Success To Date



There's More To Do

- Puget Sound water quality
- Salmon recovery
- Stormwater control
- Flood control
- Trail connections
- Passive recreation opportunity
- Forest and farm economies



Protect the remaining high conservation value lands
in King County, within a generation.



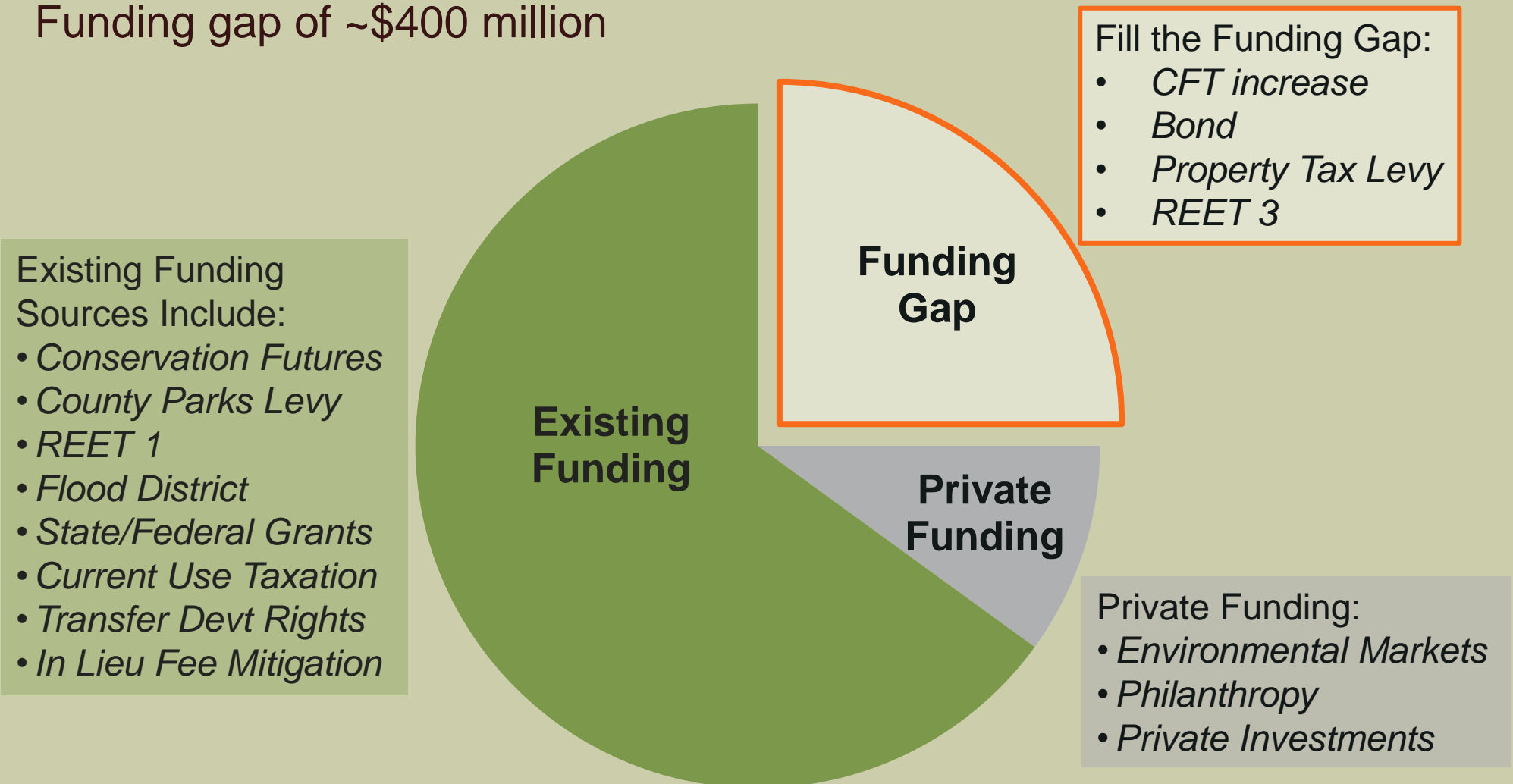
Conservation & Funding Targets

Conserve approx. 66,000 acres of land (*easement or fee acquisition*)

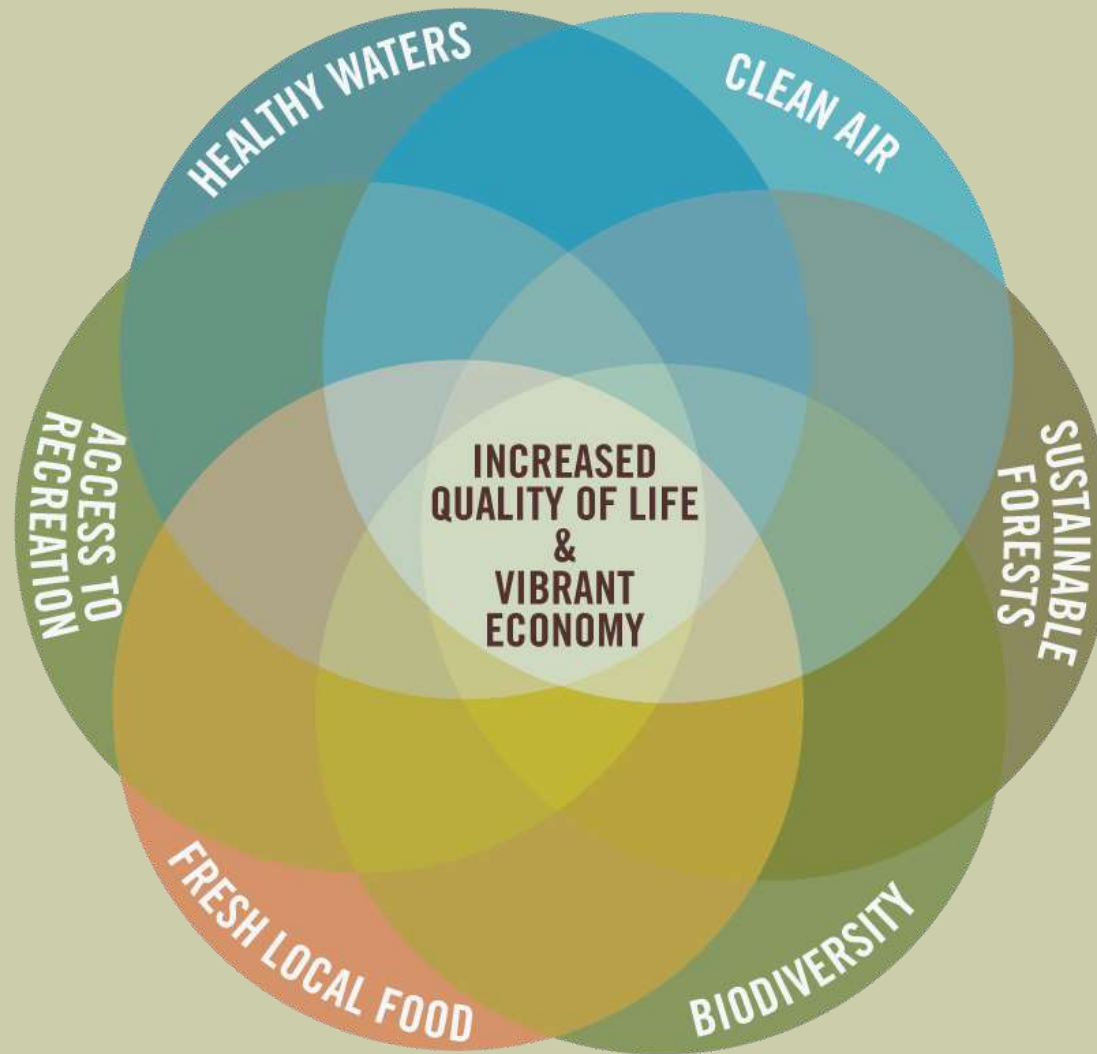
Estimated cost of \$1.5-1.8 billion (*land + transaction costs + 30 years O&M*)

Significant funding is already identified (*“Existing” + “Private” Funding*)

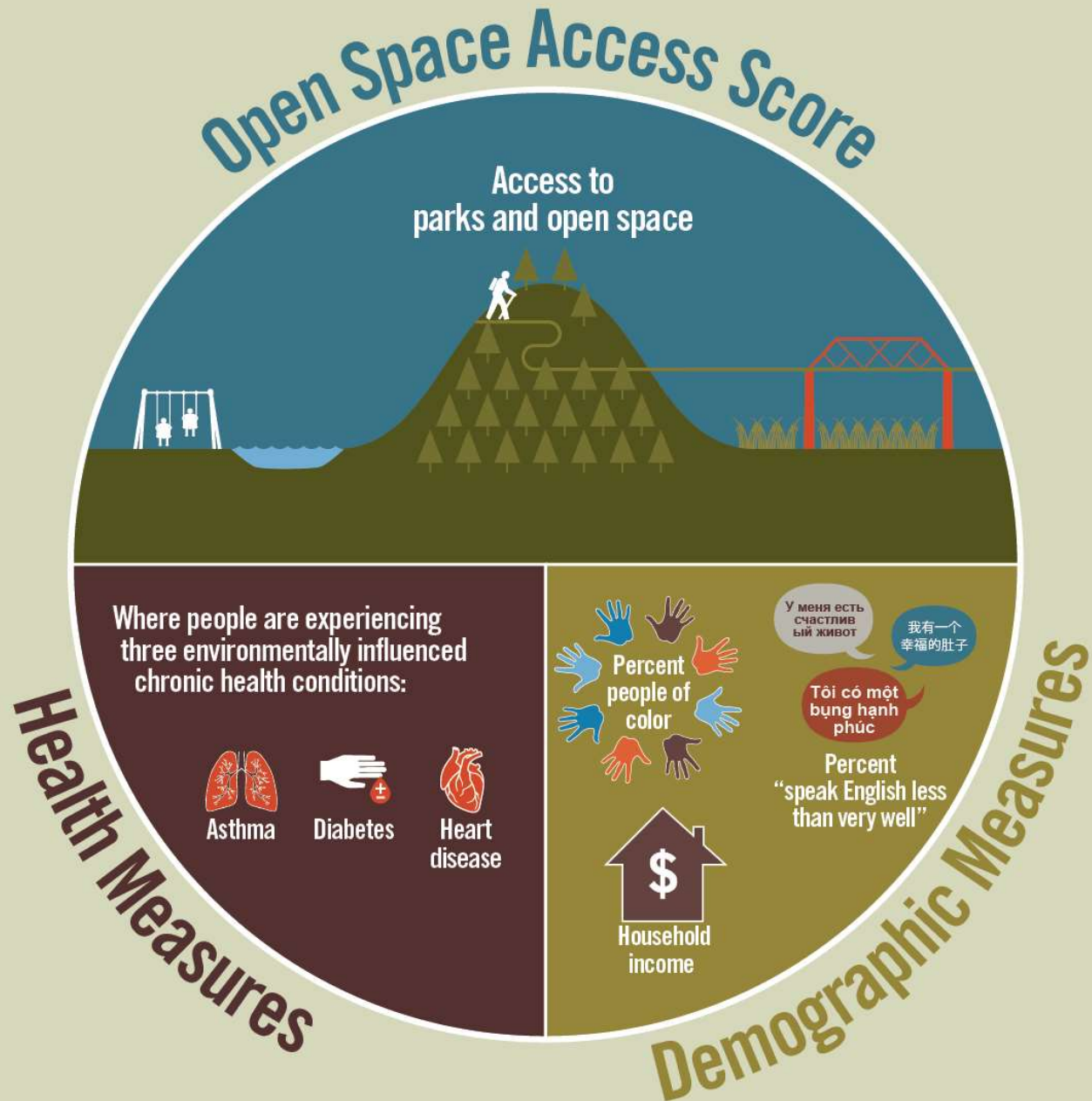
Funding gap of ~\$400 million













Conservation protects what we love about this region



Open Space Equity Analysis



Understanding “Priority” in Open Space Equity Scoring

MEASURE	“VERY HIGH PRIORITY” OPEN SPACE EQUITY SCORE	“VERY LOW PRIORITY” OPEN SPACE EQUITY SCORE
Open Space Access	Less access 	More access 
Health/Hospitalizations	Less healthy 	More healthy 
Household income	Lower income 	Higher income 
Racial diversity	More diverse 	Less diverse 
Language diversity	More language diversity 	Less language diversity 

Open Space Equity Score Using Park Service Area

DRAFT

Urban Growth Boundary

Urban Tract Scores

50% Weighted Service Area Access w/ ESJ demographics

- 0.9 - 1.4 Very Low Priority (more access, more healthy, less diverse, more wealthy)
- 1.5 - 1.9 Low Priority
- 2.0 - 2.4 Medium Priority
- 2.5 - 3.0 High Priority
- 3.1 - 4.5 Very High Priority (less access, less healthy, more diverse, less wealthy)

4 2 0 4
Miles



draft map
work in progress



King County
GIS CENTER

The information included on this map has been compiled by King County staff from a variety of sources and is subject to change without notice. King County makes no representations or warranties, express or implied, as to accuracy, completeness, timeliness, or rights to the use of such information. This document is not intended for use as a survey product. King County shall not be liable for any general, special, indirect, incidental, or consequential damages including, but not limited to, lost revenues or lost profits resulting from the use or misuse of the information contained on this map. Any use of this map or information on this map is prohibited except by written permission of King County.

Open Space Equity Score Using Park Service Area

DRAFT

Urban Growth Boundary

Urban Tract Scores

50% Weighted Service Area Access w/ ESJ demographics

- 0.9 - 1.4 Very Low Priority (more access, more healthy, less diverse, more wealthy)
- 1.5 - 1.9 Low Priority
- 2.0 - 2.4 Medium Priority
- 2.5 - 3.0 High Priority
- 3.1 - 4.5 Very High Priority (less access, less healthy, more diverse, less wealthy)

4 2 0 4
Miles

GOAL

Open Space Equity Score

Very Low Priority

Low Priority

Medium Priority

High Priority

Very High Priority



King County
GIS CENTER

The information included on this map has been compiled by King County staff from a variety of sources and is subject to change without notice. King County makes no representations or warranties, express or implied, as to accuracy, completeness, timeliness, or rights to the use of such information. This document is not intended for use as a survey product. King County shall not be liable for any general, special, indirect, incidental, or consequential damages including, but not limited to, lost revenues or lost profits resulting from the use or misuse of the information contained on this map. Any sale of this map or information on this map is prohibited except by written permission of King County.

Open Space Equity: Community Engagement

- Which properties in urban areas would communities like to protect as open space?
- How do various communities want to use open space?
- What ideas do community members have about how to care for open space?
- How can we support community-driven priorities for open space protection?



We're planting 1 million trees



and we are doing it equitably by:

- Engaging with partners
- Engaging with communities and the public
- Building a tool for tree planting decisions
- Increasing tree canopy for human and environmental benefits



A child is running up a grassy hill towards the camera. The hill is covered in dry, golden-brown grass. To the left of the child, there is a small, young tree with green leaves. The background is a clear blue sky with a bright sun at the top center, creating a lens flare effect. The overall scene is bright and sunny.

THE TIME IS **NOW**
TO CONSERVE
KING COUNTY'S LANDS

FOR FUTURE GENERATIONS

<http://kingcounty.gov/land-conservation>